

# S. I. L. B. NEWS

January, February, and March 2016



shutterstock · 72864670

**Guiding Light—Beacon of Hope**

## **PRESIDENT'S MESSAGE**

### **Message from President Jodean**

Hello Ladies,

As we enter the latter part of the Soroptimist Year and our busiest time, I would like to take a moment to say, "Thank You." Thank you for letting me represent our club in Turkey at the international convention. Thank you for all the support and dedication you have shown me and our club. We all had great fun with the dinner and a movie series for Meals on Wheels. The Zombie Bash was also tons of fun (so I heard, as I was home with Strep throat). Christmas gift giving was also a success with the families at Tichenor. Our effort to keep the actual gifts to a minimum and allow the parents of these families, with gift cards, be the heroes in their children's eyes, made Christmas a memorable one and this year's giving such a success.

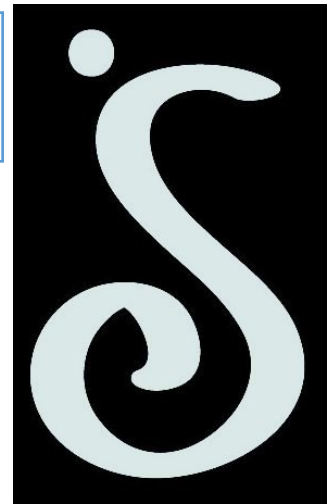
Ahead of us we have our Scholarship Dinner on April 20<sup>th</sup> (don't forget your tissues), Women Who Make a Difference on May 7<sup>th</sup> (being held at a new location this year), Camino Real Regional Spring Conference on May 13<sup>th</sup> thru May 15<sup>th</sup> in Pasadena at the Hilton Hotel (where some of our members will be getting pins for 35 to 40 years of service) and last but certainly not the least, Shopping with Soroptimist on June 11<sup>th</sup>. This event happens to be one of the favorites for many of our members. It gives us a chance to directly help someone prepare for entry or reentry into the workforce. You see the transformation that these women go through from the beginning of the morning to the afternoon. It's not just the shoes, outfits and make up, it's a transformation in attitude and self-esteem.

As this will be the last time I will be addressing you in the newsletter as your President, I just want to say what a pleasure it has been being the President of this organization and working with such an amazing group of women.

Respectfully yours,

Jodean

President.



### **SPRING BIRTHDAYS**

Apr 1 Judy Hirsch  
Apr 3 Cheryl Sears  
Apr 13 Nancy Hegelheimer  
Apr 17 Susan Berkman

May 1 Judy Pedneault  
May 6 Arlene Sellers  
May 7 Minnie Douglas  
May 11 Lauri Blanchard  
May 11 Josephine Fitzpatrick  
May 23 Nancy Freeze  
May 27 Robyn Thomas

June 2 Michele Wilkosz  
June 5 Barbara Freeman  
June 11 Ann Haberman  
June 24 Hazel Wallace  
June 27 Jodean Pelzman  
June 29 Gail Wasil

## UPCOMING EVENTS

### SCHOLARSHIP DINNER

The Scholarship Dinner will be held Wed., April 20th at the Grand. Cost is \$30.00, and attendees can sign up and pay at the April 6th Business Meeting. As always, this will be a memorable and rewarding event, so don't miss it !

---

### SCRABBLE NIGHT

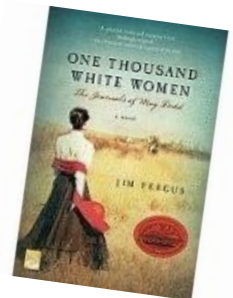


Due to vacations, April Scrabble Night will be cancelled. Look for an announcement in the next newsletter regarding the next Scrabble Night.

---

### SILB BOOK CLUB

The SILB Readers will meet on **Thursday, May 12th, 6:00 p.m.**, at Lori DeLaney's home 1112 Palo Verde Ave. The book for discussion is "**1000 White Women**" by Jim Fergus. Dinner is potluck: please let Lori know what you will be bringing. All are invited to attend. Come prepared for a rousing discussion and new thoughts.



### WOMEN WHO MAKE A DIFFERENCE CHAMPAGNE BRUNCH

Our annual Women Who Make A Difference Brunch will be held **May 7th, 10:00 a.m.** at **the Reef Restaurant in Long Beach**. Invitations were mailed out mid March, so watch for yours in the mail. This year we have seven (7) women and one (1) organization we will be honoring. They are:

Barbara Sullivan-George, Economic Development  
Margaret Huebner, Economic Development Trailblazer  
Naomi Rainey-Pierson, Education  
Dr. Jill Baker, Education Trailblazer  
Melanie R. Werts, Health  
Diane Spiegel, Human Rights and Status of Women  
Michele A. Dobson, Social Development  
Ability First



Lauri Blanchard is the Chairperson for this committee, and has jobs for each of you who can help with this event. Give her a call if you would like to volunteer.

## WELCOME TO OUR NEW SOROPTIMISTS

In March S.I.L.B. inducted **Linda Taylor** into the Club.

Prior to retirement, Linda worked in the Compliance Department of the Capital Group/American Funds. Since retiring she has volunteered at various local Senior Centers through the Volunteer Income Tax Assistance Program. Currently Linda serves on the Board of Directors for Bixby Riviera H.O.A. Linda is looking forward to participating in the philanthropic endeavors of S.I.L.B., and making new friends concurrently. **Welcome, Linda!**

---

## WINTER INTO SPRING WAS A BUSY TIME FOR

### S.I.L.B. MEMBERS

#### DINNER AND THE MOVIE “CHEF”

2016 started with the very successful dinner and movie, “Chef” held at the historic Art Theater on 4th street. The theater was packed, the movie delightful, and the question/answer time with Ross Parsons very interesting. Cuban sandwiches (as featured in the movie) and beignets were enjoyed by all. Thank you Jaye Johnson and team for a successful fund raiser benefitting Meals on Wheels.



---

## RECRUITMENT EVENT

What fun we had hosting our annual Recruitment Event January 28th at the Soroptimist House on CSULB campus. The history of past service projects represented by the House, along with the future of potential new members created a memorable evening. The site on which Soroptimist house now stands will be used by the School of Nursing as CSULB expands that program. Dr. Lucy Huckabay (a WWMD winner from 2014) attended and thanked SILB for providing a place students used for many years as a student gathering place.





## DONNA SKINNER SCULPTURE SHOWN AT BIRDIE EXHIBITION, COASTLINE ART GALLERY



Twenty of SILB Soroptimists and friends showed up to support member **Donna Skinner** whose whimsical sculptures of pelicans and birdwatcher were a part of the BIRDIE exhibition at Coastline Art Gallery. This was Donna's first professional show (we are all familiar with her special talent) and the support of her "Soroptimist Sisters" made the affair even more special. The group enjoyed a raucous dinner afterward at the Spaghetti Bender.



## HALL OF FAME 2015-2016

**Lynn Shrum** was the SILB 2015-2016 Hall of Fame winner! She appeared very surprised as she entered the luncheon on **Wednesday January 20th** and saw her friends and family waiting to honor her.

Lynn has been an enthusiastic Soroptimist since 2004, willingly and with great energy participating in each event held by the club. Along with SILB and her full time job as 2nd Vice President at Morgan Stanley, Lynn supports several other organizations in Long Beach including, but not limited to, Long Beach Day Nursery, Ability First, Steel Magnolias, and Special Olympics.

Congratulations to a very deserving Hall of Fame winner!



## **MESSAGE TO S.I.L.B. FROM NADIA VEGA-SHARRAR**

Nadia was planning on speaking at the Recruitment Event, but unfortunately she got sick and was unable to attend. Below is her presentation.

“My name is Nadia Vega-Sharrar and I joined Soroptimist International of Long Beach on June 4, 2014. This last year and a half has been a time of getting involved and learning about this great organization from the inside out. There are three things that have stood out for me in the short time of being a member; passion, encouragement, and change.

Soroptimist members have passion. The tenure of the members symbolizes the loyalty and devotion to the Club and its significance. My first Women Who Make a Difference event demonstrated the group coming together, throwing a fun and inspirational day which we often do, and affirming the amazing women that work within our community, city, and country every single day.

My experience has been so positive and worthwhile because I am surrounded by women who encourage my participation, are flexible, and are willing to hear my story and provide a good platform to share my talents. Their support helped me make the easy decision to join the Board this past year.

As every good thing does, the Club is evolving and changing, giving members the opportunity to be part of this change with new ideas and thoughts. I genuinely look forward to my continued participation with Soroptimist because of the programs it offers to empower women and girls and the ability to participate in not only your community but Soroptimist worldwide. The first step starts with membership.

Thank You!”

## OFFICERS

### **President**

Jodean Pelzman

### **President-Elect**

Susan Berkman

### **Recording Secretary**

Sally Lane

### **Corresponding Secretary**

Nadia Vega-Sharrar

### **Treasurer**

Judy Murphy

### **Assistant Treasurer (meals)**

Kathy Ward

### **Member Services**

### **Philanthropy**

### **Fund Development**

### **Community Outreach/Communications**

### **Institutional Affairs**

### **Finance Committee**

### **Immediate Past President**

### **Nominating Committee**

### **Regional Delegates**

### **Alternate Regional**

### **Alternate Federation**

## DIRECTORS

Lori DeLaney

Wendy Puzarne

Lauri Blanchard

Robin Thorne

Josephine Fitzpatrick

Susan Berkman

Rosalie Rowe

Gail Wasil

Michele Wilkosz

Margie Hersh

Armida Kurtz

Susan Reischl

Susan Berkman



## **SOROPTIMIST INTERNATIONAL OF LONG BEACH**

P.O. Box 15064

Long Beach, CA 90815

[www.Soroptimist-LongBeach.org](http://www.Soroptimist-LongBeach.org)

## **SOROPTIMIST RESOURCES**

[www.soroptimistinternational.org](http://www.soroptimistinternational.org)

[www.soroptimist.org](http://www.soroptimist.org) (S.I.A.)

[www.caminorealregion.org](http://www.caminorealregion.org) (region)